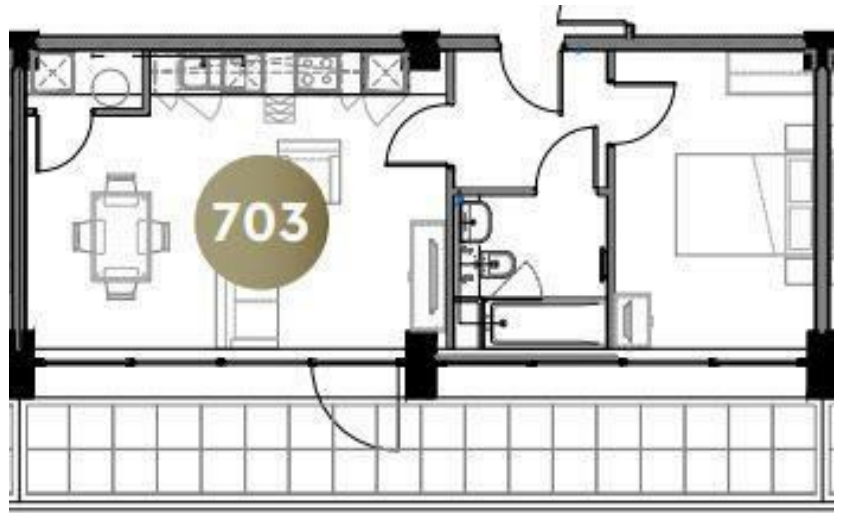




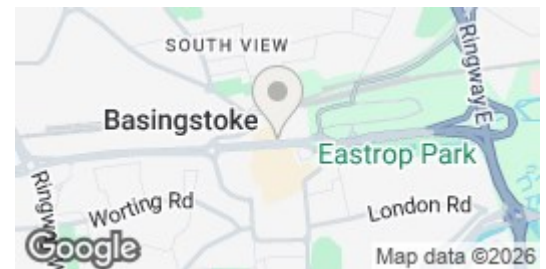
Normandy House | Alencon Link | Basingstoke | RG21 7JE

£1,260 PCM

Waterfords
Residential Sales & Lettings



Energy Efficiency Rating		
	Current	Potential
Very energy efficient - lower running costs		
(92 plus) A		
(81-91) B		
(69-80) C		
(55-68) D		
(39-54) E		
(21-38) F		
(1-20) G		
Not energy efficient - higher running costs		
England & Wales	EU Directive 2002/91/EC	



Description

Waterfords are delighted to present a collection of contemporary converted apartments in the heart of Basingstoke. Normandy House is ideally located on the bustling Alexon link within minutes walk of the Mainline Station. This modern development offers a range of one and two bedroom apartments.

Key features

- Modern Apartments
- Secure Multi Story Car Park On Site
- LED Mirror With Shaver Socket & Demister Function
- Town Centre Location
- Minimum Term 12 Month Let
- One Bedroom & Two Bedroom Apartments
- Integrated Fridge Freezer, Dishwasher, Ceramic Hob & Electric Oven
- Rain Shower & Heated Towel Rail
- Council Tax - EPC
- Available March 2026



39 The Hart Centre
Fleet
Hampshire
GU51 3LA
01252 623330
hampshirelettings@waterfords.co.uk
<https://www.waterfords.co.uk/>